

niche-eh.com

*Excellence in your environment*

Ecology and biodiversity  
Heritage management  
Environmental management and approvals  
Environmental offsetting

## Biodiversity and heritage information sessions for NSW councils

Customised programs for your staff and local community

Example programs | 2020



*A leading independent specialist environmental and heritage consultancy*

**niche**  
Environment and Heritage

## Biodiversity and heritage information sessions for NSW councils



*Our team includes 50+ qualified and experienced ecologists, botanists, archaeologists and environmental engineers – all with experience working in LGAs in NSW - and with a wealth of knowledge to share.*

### About us

Niche is leading multidisciplinary consultancy specialising in ecology and biodiversity, heritage management, environmental management and approvals, and environmental offsetting.

### Customised programs for your staff and/or community

We are experienced in delivering customised information and awareness sessions that can be individually tailored to your LGA's requirements and your unique natural environment, heritage and history.

**Programs for council staff:** Environmental officers, field personnel, planning officers – any staff and subcontractors who need to have awareness of your local biodiversity and heritage, the relevant legislation, and how it applies to your local area and projects.

**Programs for local communities:** Bush regeneration volunteers, local community groups and residents - anyone who is interested in learning about, appreciating and conserving their local area's biodiversity and heritage.

We offer one-day and two-day sessions for groups of 15 to 30 people. The topics, dates, times and venues are tailored to meet your needs.

### Biodiversity topics include:

- Local flora and fauna – terrestrial and aquatic biodiversity, nocturnal fauna spotting, native birds
- Bush regeneration - planning and techniques
- Biodiversity offsetting – Understanding the new legislation and how it applies to your environment and projects

### Heritage topics include:

- Aboriginal heritage – identification of artefacts and awareness of intangible items including creation stories
- Historical heritage - visit and learn about heritage places within your LGA
- Understanding heritage legislation and approvals pathways

### Example programs and pricing

Some example programs are included in the following pages.

To discuss tailoring a program to suit your council's needs, and for pricing information, please contact us on **02 9630 5658** or **info@niche-eh.com**.

## Example one day programs

Local Heritage Essentials for Councils	
Who should attend?	<ul style="list-style-type: none"> <li>• Council planners, environmental officers, field personnel and sub-contractors.</li> <li>• This program is ideal for staff in councils that have had limited exposure to Aboriginal and historical heritage issues, where there is no in-house heritage specialist or team, and for council field personnel and sub-contractors that frequently work in areas that have heritage sensitivity.</li> <li>• Session topics and content can also be tailored to be suitable for the general public.</li> </ul>
Topics & field trips	<p><b>Historical (European) heritage</b></p> <ul style="list-style-type: none"> <li>• Identifying historical heritage items in your area.</li> <li>• Visit local heritage places, guided by a suitably qualified historical heritage consultant.</li> <li>• Introduction to historical heritage legislation and approval pathways.</li> <li>• Subcontractor awareness sessions and materials also available.</li> </ul> <p><b>Aboriginal cultural heritage</b></p> <ul style="list-style-type: none"> <li>• Identifying Aboriginal site types in your area (including but not limited to, stone artefacts, axe-grinding grooves, scarred trees).</li> <li>• Understanding local intangible Aboriginal cultural heritage items (e.g. creation stories)</li> <li>• Visit local heritage places, guided by an appropriately qualified archaeologist and Aboriginal community members, where required and appropriate.</li> <li>• Introduction to heritage legislation and statutory requirements.</li> <li>• Subcontractor awareness sessions and materials also available.</li> </ul>
Learning outcomes	<ul style="list-style-type: none"> <li>• Understanding of the consultation process as outlined by the Department of Planning, Industry and Environment (DPIE), Biodiversity and Conservation Division (BCD).</li> <li>• Awareness and appreciation of historical and Aboriginal heritage items within the LGA.</li> <li>• Understanding of legislation and approvals pathways and how they apply to local heritage items and projects.</li> <li>• Learning about conservation measures that could be undertaken by council.</li> </ul>
What's included	<ul style="list-style-type: none"> <li>• An appropriately qualified heritage consultant develops and presents a tailored program, with the involvement of members of the local Aboriginal community where appropriate.</li> <li>• Day includes visits to 2-3 heritage sites in the LGA.</li> <li>• Attendees take away a copy each of a local heritage handbook.</li> </ul>
Session duration and pricing	<p><b>Half-day, one-day and two-day sessions are available, for 15-30 participants.</b></p> <p><b>To discuss tailoring a program to suit your council's needs, and for pricing information, please contact us on 02 9630 5658 or <a href="mailto:info@niche-eh.com">info@niche-eh.com</a></b></p>

Local Biodiversity Information Sessions for Councils (Terrestrial and Aquatic Environments)	
Who should attend?	<ul style="list-style-type: none"> <li>• Council planners, environmental officers, field personnel, bush regeneration groups, sub-contractors and the general public.</li> <li>• These programs are ideal for staff in councils and sub-contractors that have had limited exposure to biodiversity issues and for council field personnel and sub-contractors that frequently work in areas that have biodiversity sensitivity.</li> <li>• Session topics and content can also be tailored to be suitable for the general public.</li> </ul>
Topics & field trips	<p><b>Terrestrial biodiversity or aquatic biodiversity</b></p> <ul style="list-style-type: none"> <li>• Identifying key terrestrial or aquatic biodiversity values in your area.</li> <li>• Visit local reserves or water ways, guided by a suitably qualified terrestrial ecologist or aquatic ecologist.</li> <li>• Information and discussion about the threats to identified biodiversity.</li> <li>• Information and discussion about ways to protect and restore threatened biodiversity.</li> <li>• Information and discussion about what local council is doing to protect threatened biodiversity.</li> <li>• Introduction to current biodiversity legislation and approval pathways.</li> <li>• Subcontractor awareness sessions and materials also available.</li> </ul>
Learning outcomes	<ul style="list-style-type: none"> <li>• Awareness and appreciation of biodiversity values within the LGA (with a focus on threatened biodiversity).</li> <li>• Ability to identify threatened biodiversity within the LGA.</li> <li>• Understand the key threats to threatened biodiversity.</li> <li>• Understand the efforts undertaken by council to protect and conserve biodiversity values in the LGA.</li> <li>• Understanding of legislative requirements relating to disturbance and conservation of biodiversity values (threatened and non-threatened biodiversity).</li> <li>• Answers to questions attendees may have about biodiversity values, threats, conservation measures and legislation.</li> </ul>
What's included	<ul style="list-style-type: none"> <li>• Ecologist visits sites, prepares and presents a tailored program and handbook.</li> <li>• Day includes visits to 2-3 natural areas in the LGA.</li> <li>• Attendees take away a copy each of a local biodiversity handbook.</li> </ul>
Session duration and pricing	<p><b>Half-day, one-day and two-day sessions are available, for 15-30 participants.</b></p> <p><b>To discuss tailoring a program to suit your council's needs, and for pricing information, please contact us on 02 9630 5658 or <a href="mailto:info@niche-eh.com">info@niche-eh.com</a></b></p>

Bushcare Planning and Techniques for Councils	
Who should attend	<ul style="list-style-type: none"> <li>• Council planners, environmental officers, field personnel, bush regeneration groups and sub-contractors.</li> <li>• Bush care volunteers, community groups and residents with an interest in the natural environment.</li> <li>• Tailored versions of these programs are ideal for staff in councils that have had limited or only moderate exposure to biodiversity issues and for council field personnel and sub-contractors that frequently work in areas that have biodiversity sensitivity.</li> <li>• Session topics and content can be tailored to be suitable for the general public.</li> </ul>
Topics & field trips	<p><b>Bushcare planning and techniques</b></p> <ul style="list-style-type: none"> <li>• Visit and assess local bushcare areas, guided by a suitably qualified practitioner.</li> <li>• Understand the conservation status of your local flora.</li> <li>• Learn about conservation and bushcare programs in your LGA.</li> <li>• Learn about best practice weed management strategies and techniques.</li> <li>• Introduction to best practice planning for ecological restoration projects.</li> <li>• Gain knowledge of bush regeneration theory, techniques and outcomes.</li> <li>• Subcontractor awareness sessions and materials also available.</li> </ul> <p><b>Current environmental legislation</b></p> <ul style="list-style-type: none"> <li>• Presentation on current environmental legislation framework (including DDARs and BSSARs).</li> <li>• Presentation of real industry examples of environmental legislation applied to projects.</li> <li>• Working through hypothetical examples of environmental legislation particularly relevant to council DAs.</li> <li>• Question and answer session on environmental legislation.</li> </ul>
Learning outcomes	<ul style="list-style-type: none"> <li>• Awareness and appreciation of bush care programs items within the LGA.</li> <li>• Ability to identify areas requiring bushcare.</li> <li>• Ability to identify key weed species and understand their threats to native biodiversity.</li> <li>• Understand the key weed management strategies and techniques and when to apply them.</li> <li>• Understand the principles and techniques of bush regeneration / restoration and when to apply them.</li> <li>• Understand the efforts undertaken by council and local landcare groups to protect and conserve biodiversity values in the LGA through bushcare.</li> <li>• Understanding of legislative requirements relating to bushcare, weed management and restoration.</li> <li>• Answers to questions attendees may have about bushcare, environmental legislation, and how it applies to local areas and projects.</li> </ul>
What's included	<ul style="list-style-type: none"> <li>• Ecologist/bushcare specialist visits sites, prepares and presents a tailored program and handbook.</li> <li>• Day includes visits to 2-3 bushcare sites in the LGA.</li> <li>• Attendees take away a copy each of a local bush care handbook.</li> </ul>
Session duration and pricing	<p><b>Half-day, one-day and two-day sessions are available, for 15-30 participants.</b></p> <p><b>To discuss tailoring a program to suit your council's needs, and for pricing information, please contact us on 02 9630 5658 or <a href="mailto:info@niche-eh.com">info@niche-eh.com</a></b></p>

## Meet our team



### Ecology and biodiversity

**Dr Cairo Forrest**, Botanist

BSc (Hons), PhD (Ecology/Genetics), Accredited BAM Assessor

Cairo is a botanist with expert knowledge of NSW environmental legislation and threatened species compliance. He is a natural communicator with experience in leading biodiversity workshops for councils and community groups.



**Yogesh Nair**, Bush Regeneration Specialist

AdvDipEnvMgmt, BEnvSci, MSc Biodiversity Conservation, Accredited BAM Assessor, AABR Accredited Bush Regeneration Practitioner

Yogesh is an ecologist, bush regeneration practitioner and trainer with 10 years of experience in restoration and rehabilitation of vegetation.



**Matthew Russell**, Aquatic Ecologist

BSc

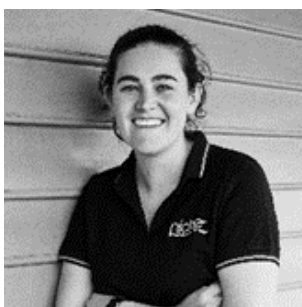
Matthew has been a professional scientist since 2001, specialising in aquatic ecology and river management. He has worked extensively with local NSW state and federal governments on varying issues of management of the aquatic environments and has a wealth of knowledge to share.



**Jessie Bear**, Ecologist

BNatSc (Adv) (EnvMgt)

Jessie is an ecologist with experience in flora and fauna surveys, weed mapping, and targeted threatened species surveys. Her experience includes the application of the Biodiversity Assessment Method, and Biodiversity Development Assessment Reports.



**Sarah Hart**, Ecologist

BSc, MSc, GradDip EnvMgmt

Sarah has a passion for the natural world and a background in bush regeneration across rainforest remnants in NSW. She has experience in weed identification, general flora and fauna impact assessments, threatened species surveys as well as vegetation mapping within NSW.



**Stephen Bloomfield, Ecologist**  
B Env Sc (Coastal Mgmt)

Stephen is an Accredited Assessor under the *NSW Biodiversity Conservation Act 2016* and has more than 14 years of experience as an ecologist. He is committed to preserving biodiversity whilst meeting the needs of the community.



**Patrick McEvoy, Ecologist**  
BEnvScMgt, GradDipEnv, Master of Research

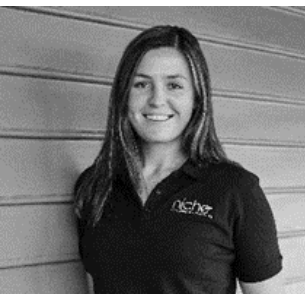
Patrick is experienced in a range of threatened flora and fauna survey techniques, targeting both terrestrial and aquatic species. He aims to apply the principles of science and sustainability and provide timely and accurate advice allowing his clients to navigate the planning landscape with ease.

## Heritage management



**Dr Morgan Disspain, Senior Heritage Consultant**  
B Arch (Hons), PhD

Morgan's cultural heritage career has incorporated both academic and consulting experience and citizen science. She has extensive experience in cultural heritage management and archaeological research projects and has received numerous awards for her work.



**Layne Holloway, Heritage Consultant**  
BSc (Land and Heritage Management)

Layne has experience from a diverse range of projects and provides high quality and ethically sound heritage management solutions. She is proficient in due diligence assessments, NSW environmental legislation analysis, geophysical survey and digitisation of site records.



**Sam Ward, Heritage Consultant**  
BA (Hons) Archaeology

Sam is proficient in both Aboriginal cultural heritage and historic research. He has worked on numerous archaeology projects in the Sydney and Illawarra regions, and has an expanding understanding of heritage management practices in NSW.



**Sarah McGuinness, Heritage Consultant**  
BA Archaeology

Sarah has 10 years of experience in Aboriginal and historical archaeology and is highly experienced in Aboriginal community consultation and liaison. She is a specialist in survey, site identification and excavation.

## Contact Us

### Niche Environment and Heritage

02 9630 5658

info@niche-eh.com

NSW Head Office – Sydney  
PO Box 2443 North Parramatta  
NSW 1750 Australia

QLD Head Office – Brisbane  
PO Box 540 Sandgate  
QLD 4017 Australia

Sydney  
Brisbane  
Cairns  
Port Macquarie  
Illawarra  
Coffs Harbour  
Central Coast  
Gold Coast  
Canberra



## Our services

### Ecology and biodiversity

Terrestrial  
Freshwater  
Marine and coastal  
Research and monitoring  
Wildlife Schools and training

### Heritage management

Aboriginal heritage  
Historical heritage  
Conservation management  
Community consultation  
Archaeological, built and landscape values

### Environmental management and approvals

Impact assessments  
Development and activity approvals  
Rehabilitation  
Stakeholder consultation and facilitation  
Project management

### Environmental offsetting

Offset strategy and assessment (NSW, QLD, Commonwealth)  
Accredited BAM assessors (NSW)  
Biodiversity Stewardship Site Agreements (NSW)  
Offset site establishment and management  
Offset brokerage  
Advanced Offset establishment (OLD)